

Model: PDL-0...



- Switching range:
0.1 ... 1 to 60 ... 600 bar
- Temperature:
max. 80 °C
- Repeatability:
≤ 1 % of F. S.
- Material: Brass
- Connection:
G 1/4, 1/4 NPT

Model: PDL-1...



KOBOLD offices exist in the following countries:

**ARGENTINA, AUSTRIA, BELGIUM, BRAZIL, CANADA,
 CHINA, COLOMBIA, FRANCE, GREAT BRITAIN, NETHERLANDS,
 POLAND, SWITZERLAND, USA, VENEZUELA**

KOBOLD Messring GmbH
 Nordring 22-24
 D-65719 Hofheim/Ts.
 ☎ (06192) 299-0
 Fax (06192) 23398
 E-mail: info.de@kobold.com
 Internet: www.kobold.com

Model:
 PDL-

Description

KOBOLD pressure meter/-monitor of model PDL are economical electronic pressure switches. The switch output can be adjusted on site with an adjusting screw.

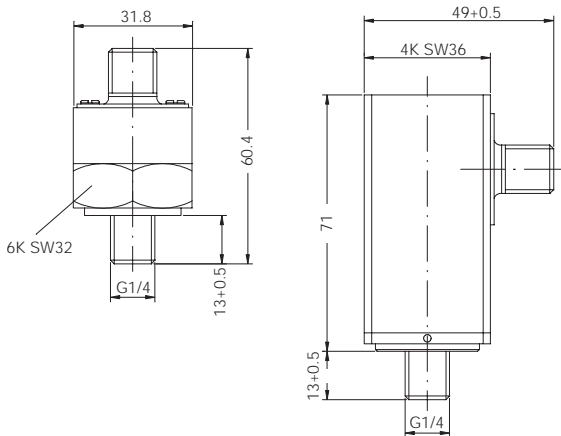
With help of an elastic spring measuring element and by usage of Hall effect, upto 2 switching outputs can be generated for a given pressure. The switching outputs can be delivered optionally with N/O or N/C function.

The small robust construction and different pressure connections make it an ideal unit for serial usage.

Dimensions

Model: PDL-0...

Model: PDL-1...



Applications

- Hydraulic and fluid systems
- Apparatus Manufacturing
- Machine Construction
- Refrigeration

Technical data

| | |
|--------------------------|--|
| Housing: | PDL-0... : Brass PDL-1... : Aluminium, anodised |
| Upper part: | Plastic |
| Connections: | Standard: G 1/4 male, brass Option: 1/4 NPT, brass Others on client request |
| Measuring element: | PDL-0... : Capsule element, copper alloy PDL-1... : Spiral spring, st. steel 1.4571 |
| Max. temperature: | Store: -30...+80 °C Medium: -20...+80 °C Environment: -20...+80 °C |
| Temperature comp. Range: | 0...80 °C |
| Temperature influence: | 0.4 % / 10K |
| Overload limit: | ≤ 10 bar: 5 times ≥ 16 bar: 2 times |
| Load change: | 1 x 10 ⁶ |
| Electrical connection: | plug M12 x 1 (4-pole) Option: 1.5 m cable |
| Switching function: | N/C or N/O, p-switching |
| Adjustability: | 10...100% of F.S. |
| Switch point adjustment: | with help of adjusting screw |
| Repeatability: | < 1 % of F.S. |
| Switching hysteresis: | ≤ 10 % of F.S. |
| Power supply: | 10...30 V _{DC} |
| Power rating: | max. 100 mA (max. 30 V _{DC}) |
| Protection cat.: | IP 65 (IP 67 by cable output) |

Ordering data (Example: PDL-0131 R2 B025)

| Measuring range | Ordering code 1 N/O G 1/4, plug | Ordering code 2 N/O G 1/4, plug |
|-----------------|---------------------------------------|---------------------------------------|
| 0.1 to 1 bar | PDL-0131 R2 B025 | PDL-0132 R2 B025 |
| 0.16 to 1.6 bar | PDL-0131 R2 B035 | PDL-0132 R2 B035 |
| 0.25 to 2.5 bar | PDL-0131 R2 B045 | PDL-0132 R2 B045 |
| 0.4 to 4 bar | PDL-0131 R2 B055 | PDL-0132 R2 B055 |
| 0.6 to 6 bar | PDL-0131 R2 B065 | PDL-0132 R2 B065 |
| 1 to 10 bar | PDL-0131 R2 B075 | PDL-0132 R2 B075 |
| 1.6 to 16 bar | PDL-0131 R2 B085 | PDL-0132 R2 B085 |
| 2.5 to 25 bar | PDL-0131 R2 A095 | PDL-0132 R2 A095 |
| 6 to 60 bar | PDL-1131 R2 A115 | PDL-1132 R2 A105 |
| 10 to 100 bar | PDL-1131 R2 A125 | PDL-1132 R2 A115 |
| 16 to 160 bar | PDL-1131 R2 A135 | PDL-1132 R2 A125 |
| 25 to 250 bar | PDL-1131 R2 A145 | PDL-1132 R2 A135 |
| 40 to 400 bar | PDL-1131 R2 A155 | PDL-1132 R2 A145 |
| 60 to 600 bar | PDL-1131 R2 A165 | PDL-1132 R2 A155 |

| Measuring range | Ordering code 1 N/C G 1/4, plug | Ordering code 2 N/C G 1/4, plug |
|-----------------|---------------------------------------|---------------------------------------|
| 0.1 to 1 bar | PDL-0133 R2 B025 | PDL-0134 R2 B025 |
| 0.16 to 1.6 bar | PDL-0133 R2 B035 | PDL-0134 R2 B035 |
| 0.25 to 2.5 bar | PDL-0133 R2 B045 | PDL-0134 R2 B045 |
| 0.4 to 4 bar | PDL-0133 R2 B055 | PDL-0134 R2 B055 |
| 0.6 to 6 bar | PDL-0133 R2 B065 | PDL-0134 R2 B065 |
| 1 to 10 bar | PDL-0133 R2 B075 | PDL-0134 R2 B075 |
| 1.6 to 16 bar | PDL-0133 R2 B085 | PDL-0134 R2 B085 |
| 2.5 to 25 bar | PDL-0133 R2 A095 | PDL-0134 R2 A095 |
| 6 to 60 bar | PDL-1133 R2 A115 | PDL-1134 R2 A105 |
| 10 to 100 bar | PDL-1133 R2 A125 | PDL-1134 R2 A115 |
| 16 to 160 bar | PDL-1133 R2 A135 | PDL-1134 R2 A125 |
| 25 to 250 bar | PDL-1133 R2 A145 | PDL-1134 R2 A135 |
| 40 to 400 bar | PDL-1133 R2 A155 | PDL-1134 R2 A145 |
| 60 to 600 bar | PDL-1133 R2 A165 | PDL-1134 R2 A155 |